

ArcGIS® Data Appliance

2D Maps and 3D Globes for Your Server

The ArcGIS® Data Appliance provides terabytes of prerendered nationwide and worldwide data that you can host on your own secure server. This data consists of multiscale 2D maps and 3D globes that are cached, prerendered, and optimized for publishing with ArcGIS Server and includes imagery, street map, shaded relief, and elevation data.



Ready to Use

Users within your organization can access the ArcGIS Data Appliance content and fuse it with data collected by different departments for analysis and visualization of business processes and mission-critical applications. Or, using ArcGIS Server, publish the content to customers outside your organization to provide them with access to crucial data such as land records, zoning, or planning information.



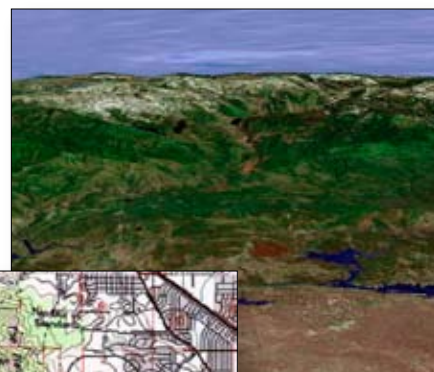
Because the ArcGIS Data Appliance is optimized to work with ArcGIS Server, data and services provided by the ArcGIS Data Appliance adhere to the same open standards and interoperability that ArcGIS Server provides. This allows multiple divisions, departments, and client applications to share a common information architecture as well as technology and services, such as geocoding and routing, more efficiently.



What Is Included

The ArcGIS Data Appliance is available as a preconfigured network storage device preloaded with one of the following data collections. Each data collection includes a set of basemap layers in 2D and 3D globe format that you can combine with your own data.

- **World Collection**—World Imagery down to 15-meter resolution; World Street Map with highway-level data for the world and major road-level data for the United States and Canada; Physical World at 1.24-kilometer resolution across the entire globe and 500-meter resolution within the conterminous United States; Political World map from National Geographic's *Atlas of the World*, Eighth Edition; and World Shaded Relief at 90-meter resolution for all land areas between 60° north and -56° south latitude and 1 kilometer for all other areas.





• **USA Prime Imagery**—Seamless mosaic of 1-meter resolution aerial imagery for the contiguous United States and satellite imagery for the world at 500- and 15-meter resolutions. Commercial imagery for metropolitan areas and the best available government imagery for other areas are also included.

- **USA Imagery**—Several terabytes of a seamless mosaic of 1-meter resolution imagery for the contiguous United States along with satellite imagery for the world at 500- and 15-meter resolutions.
- **USA Street Map**—Seamless, multiscale street map with highways and major and minor roads overlaid on shaded relief imagery. This dataset is two terabytes and also includes a complete world street map with highway-level data.
- **USA Prime/World Bundle**—Includes the World Collection, USA Prime Imagery, and USA Street Map.
- **USA/World Bundle**—Includes the World Collection, USA Imagery, and USA Street Map.

ArcGIS Data Appliance fits easily into your current IT infrastructure, connecting to your existing network. A deployment guide to support the implementation of the appliance and reference and usage documentation for each data collection are included. In addition, ESRI provides one year of telephone support for any data issues; hardware support for installation, configuration, and upgrade assistance is provided by INLINE Corporation.

ArcGIS Data Appliance (Server Bundle)

The ArcGIS Data Appliance requires an ArcGIS Server Standard or Advanced license. If you do not have ArcGIS Server in your organization, you can purchase the ArcGIS Data Appliance (Server Bundle). The server bundle combines ArcGIS Server software, the data collections, Microsoft® Windows® Server 2003, and hardware to support this configuration.



ArcGIS Data Appliance (Server Bundle) includes server hardware.



For more information,
call ESRI at
1-800-447-9778.

Send e-mail inquiries to
info@esri.com.

Visit ESRI's Web page at
www.esri.com.

Copyright © 2007 ESRI. All rights reserved. ESRI, the ESRI globe logo, ArcGIS, @esri.com, and www.esri.com are trademarks, registered trademarks, or service marks of ESRI in the United States, the European Community, or certain other jurisdictions. Other companies and products mentioned herein may be trademarks or registered trademarks of their respective trademark owners.

G26000ESRI3C6/07ed

For more details, visit **www.esri.com/dataappliance.**