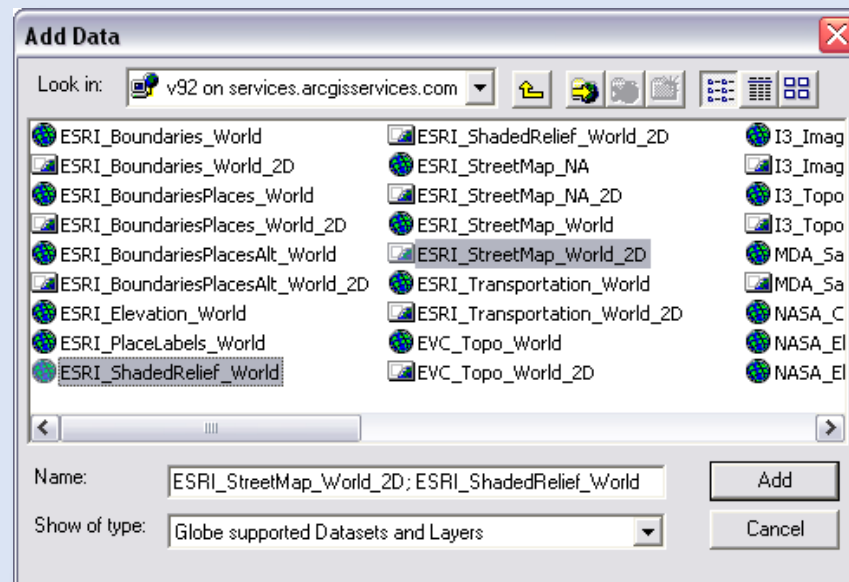
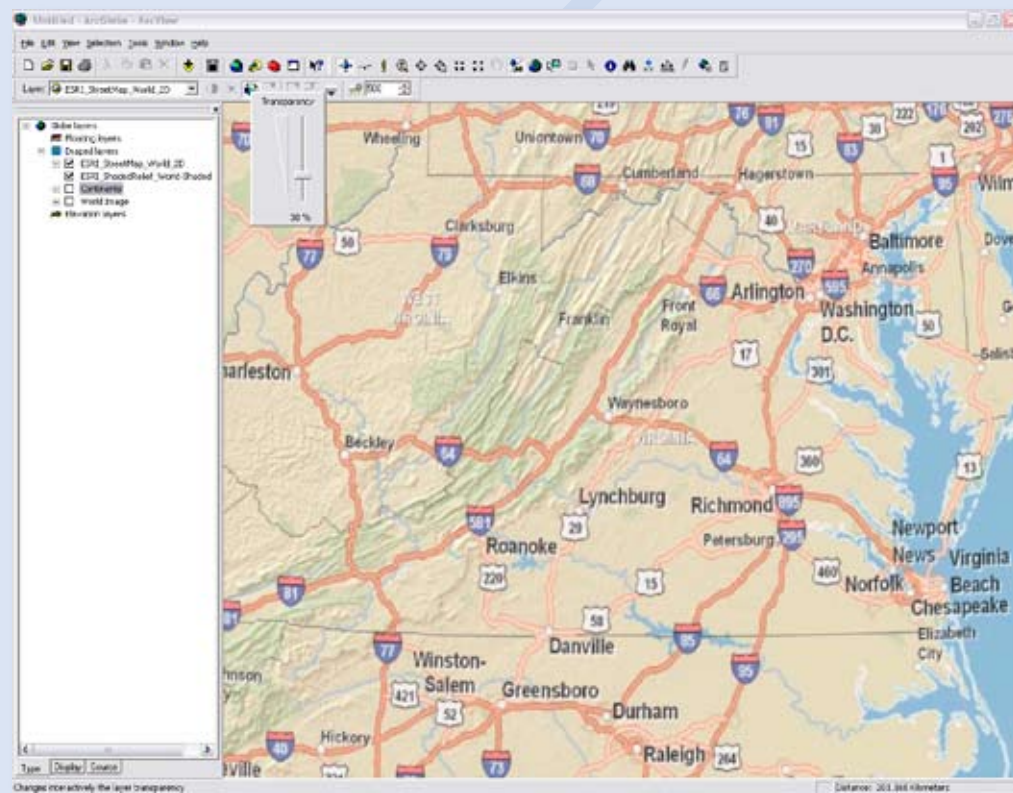


8. Select a service and click **Add**. To select more than one service, hold down the Ctrl key.

Note: If you are using ArcGlobe, you will see both 2D map and 3D globe services. For better performance within ArcGlobe, select a 3D service, which is identified by the globe icon. If you are using ArcMap, you will only see 2D map services.

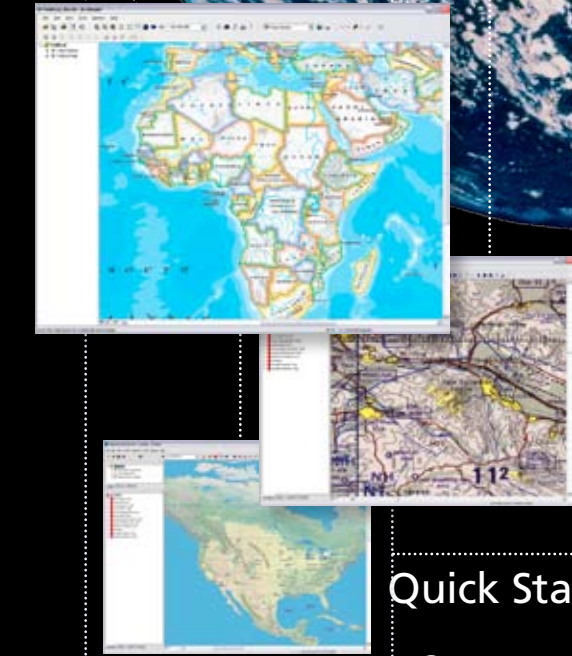


The service or services you selected will display in your ArcMap or ArcGlobe window.



# Quick Start Guide

# Quick Start Guide



## ArcGIS<sup>SM</sup> Online

### Quick Start Guide for ArcGIS<sup>®</sup> Desktop

Connect to ArcGIS<sup>SM</sup> Online Services via the Web to access ready-to-use 2D maps and 3D globes and easily combine them with your own data. These cartographically designed 2D and 3D basemaps work directly with prebuilt tasks in ArcGIS<sup>®</sup> Desktop such as Place Finder and Gazetteer.

ArcGIS Online is currently in beta. To start using ArcGIS Online, you must first register for the beta program. Follow the steps in this guide to register and connect to ArcGIS Online via ArcMap<sup>™</sup> or ArcGlobe<sup>™</sup>.



## Getting Started

Register for the ArcGIS Online Beta Program

- Go to [www.esri.com/agoregister](http://www.esri.com/agoregister) and click the **Register Now** button.




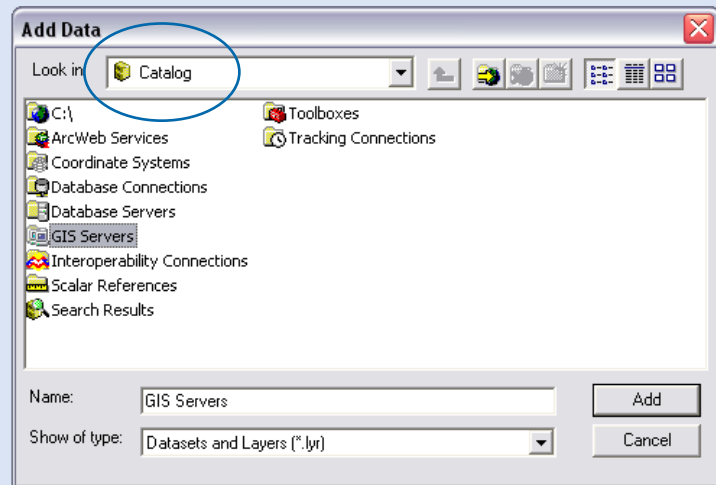
- Enter your existing ESRI Global Account user name and password or create a new account.

If you are creating a new ESRI Global Account login, you will receive an e-mail asking you to confirm your global account registration. You will automatically receive an e-mail confirming your participation in the ArcGIS Online beta program. The e-mail also contains the URL, user name, and password you need to connect to the ArcGIS Online server from ArcMap or ArcGlobe.

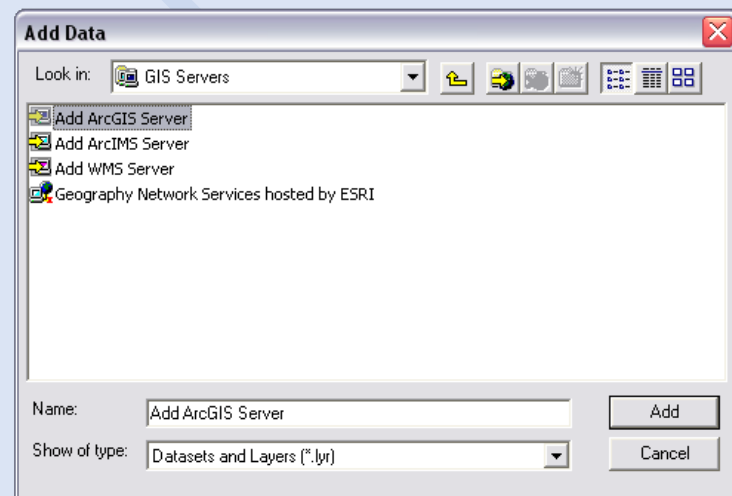
Please note: To connect to ArcGIS Online or access 3D globe services via ArcGlobe, you must have ArcGIS 3D Analyst™ 9.2. Connecting to ArcGIS Online requires ArcGIS Desktop 9.2.

## Connect to ArcGIS Online from ArcMap or ArcGlobe

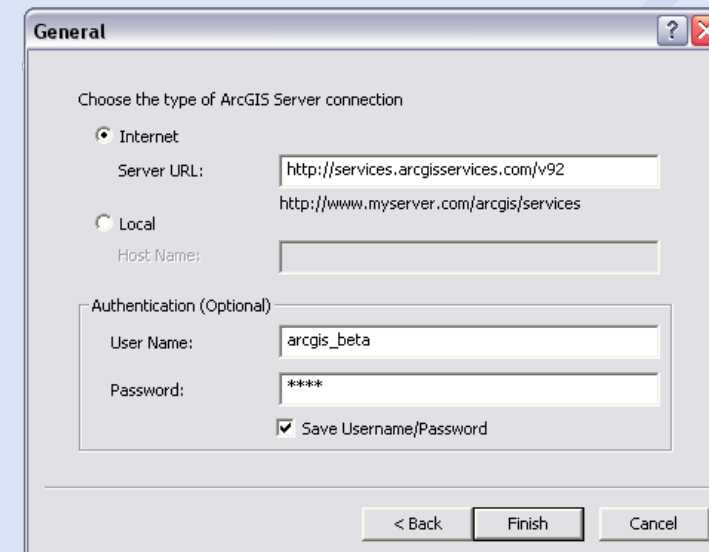
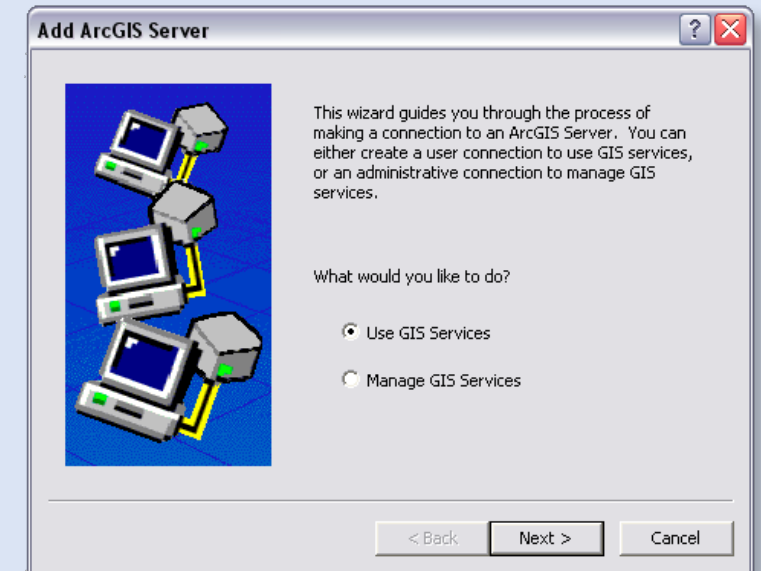
- Open a new or existing ArcMap (.mxd) or ArcGlobe (.3dd) document.
- Click the **Add Data** button. 
- In the Add Data dialog box, select **GIS Servers** and click **Add**. Make sure the Look in pull-down menu displays Catalog.



- Select **Add ArcGIS Server** and click **Add**.



- In the Add ArcGIS Server dialog box, select **Use GIS Services** and click **Next**.



- In the General dialog box, select **Internet Server URL** and type in the **Server URL, User Name, and Password** you received in your ArcGIS Online beta registration e-mail. Click **Finish**.

- In the Add Data dialog box, select the server URL you just typed in, then click **Add**.

